



Ensuring the Rights of Study Participants

Resources for Philanthropic Organizations

This presentation and its accompanying materials were made possible by a generous grant from the David & Lucile Packard Foundation

Agenda

- Introduction to Human Subjects Protection
- Identifying Potential Risks & Issues
- Tools & Resources for Philanthropic Organizations
- Scenarios
- Q & A

Disclaimer: This document does not constitute legal advice. It is meant to educate users about the protection of study participants and introduce them to the Institutional Review Board process.

Human Subjects Protection

- Ensures that research and evaluation study participants are treated **fairly, equitably, and respectfully**
- Suggests the need for funders to spot **potential issues** to consider when reviewing grants, contracts, and program-related investments (PRIs)
- Allows philanthropic organizations to fund **ethically sound** research and evaluation



What is an Institutional Review Board (IRB)?

- Independent committee of “human subjects protection”
- Reviews protocols and study materials to:
 - Assess project **ethics**
 - Promote fully informed and voluntary **participation**
 - Maximize participant **safety**
- Studies should highly consider IRB review when they have:
 - Potential participant **risks**
 - **Vulnerable** populations
 - **Sensitive** and/or **identifiable** data
 - Intentions to **publish** data in a peer-reviewed journal

Potential Risks & Issues in a Focus Group

Discussion Questions:

- Are there any **potential risks** to a person participating in this focus group?
- Are any of the questions **sensitive**?
- What other **confidentiality** issues came up for you?
- Can you think of other **concerns** for the participants?

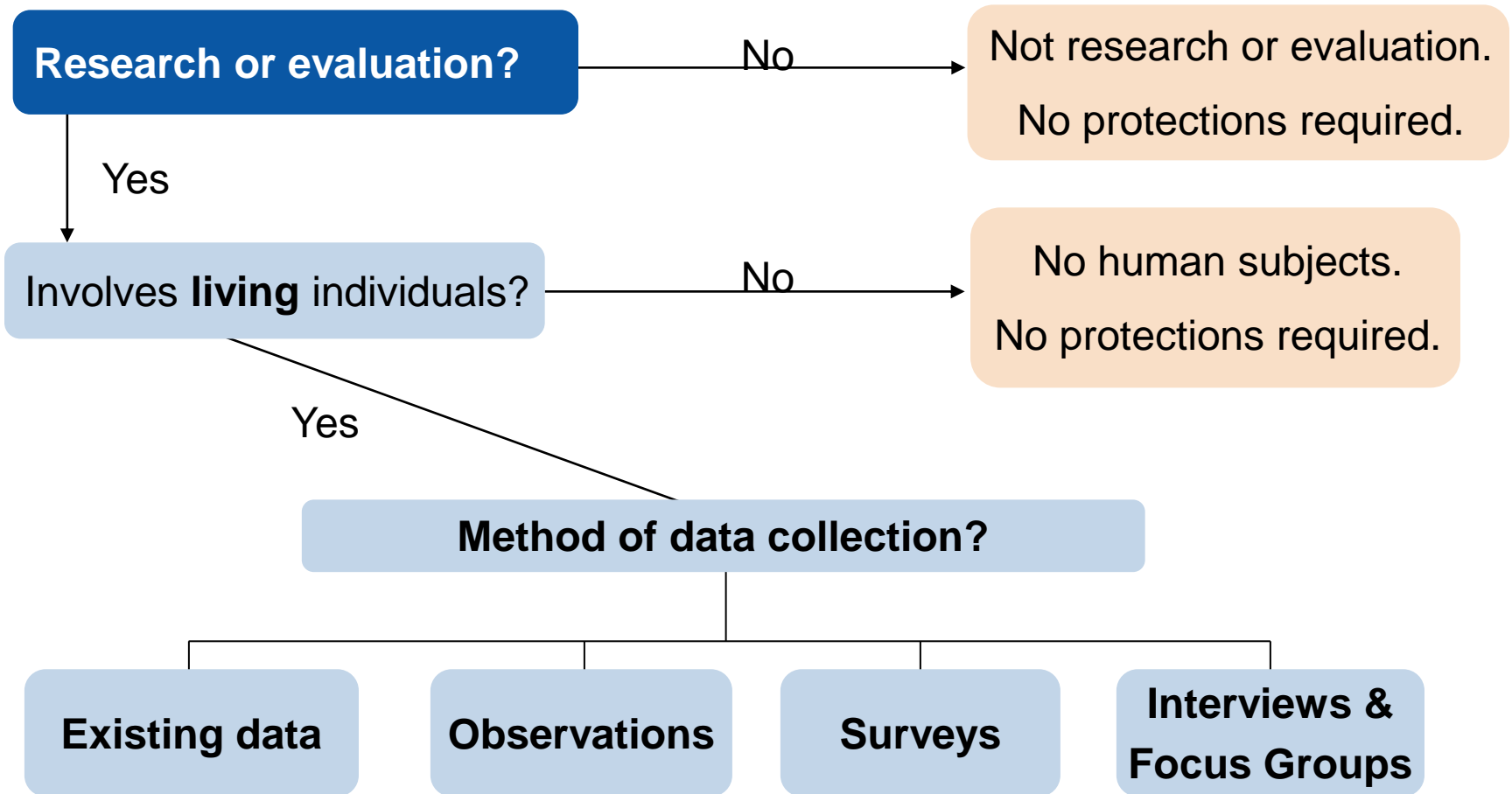
Tools & Resources

- Data collection methods often correlate with risk level



- Funders and study investigators should identify what risks might be present in a study and determine what next steps are necessary
- If there are potential risks, consider IRB approval

Decision Tree – Starting Point

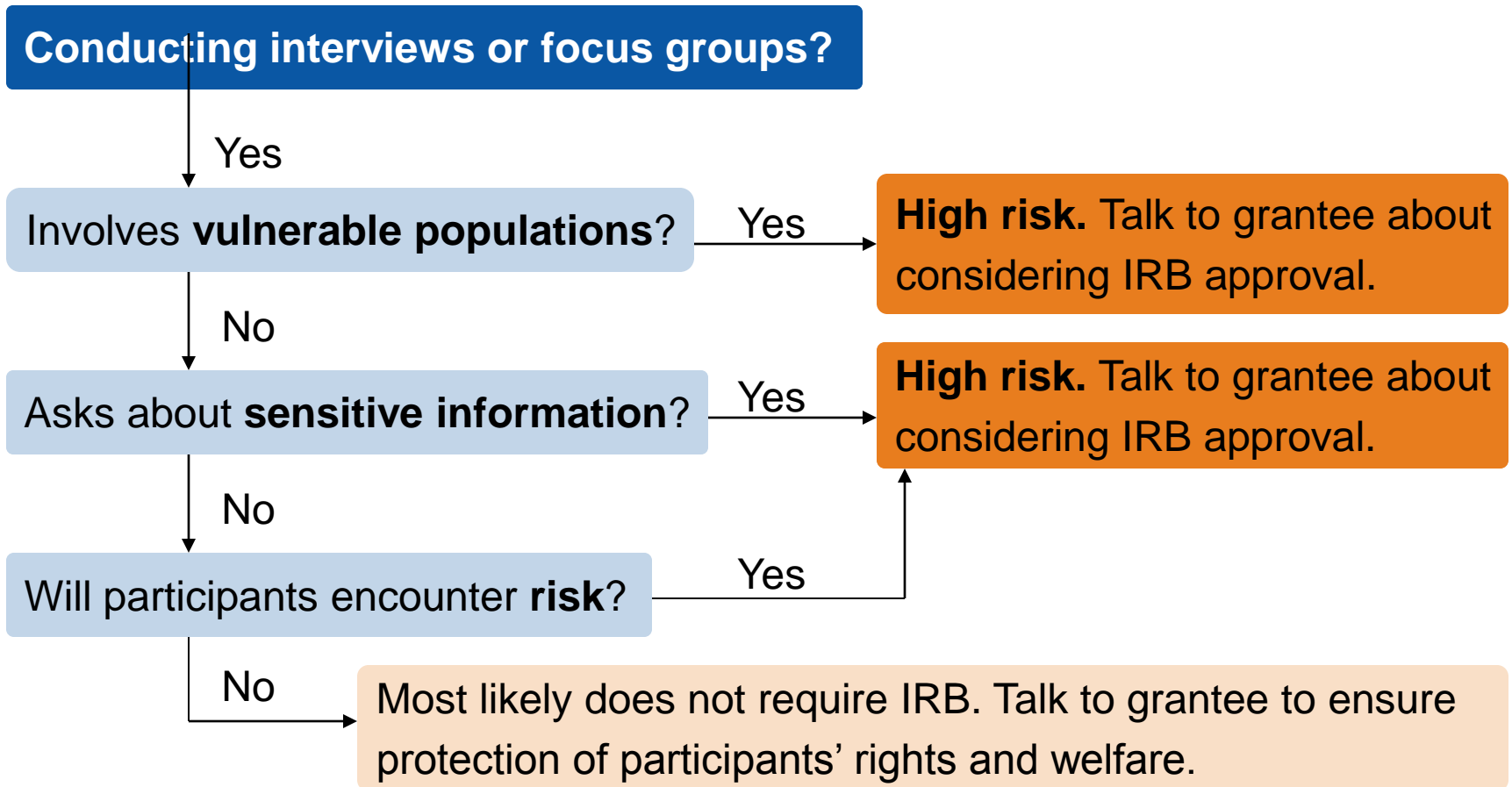


Issue Spotting Guidelines

Guidelines outline risk factors aside from data collection methods

- A. Potential Risks
- B. Equitable Selection
- C. Informed Consent
- D. Privacy & Confidentiality
- E. Identifiable & Sensitive Information
- F. Vulnerable Populations
- G. Research in Public Schools
- H. International Research/Evaluation
- I. Publishing Findings

Decision Tree – Focus Group

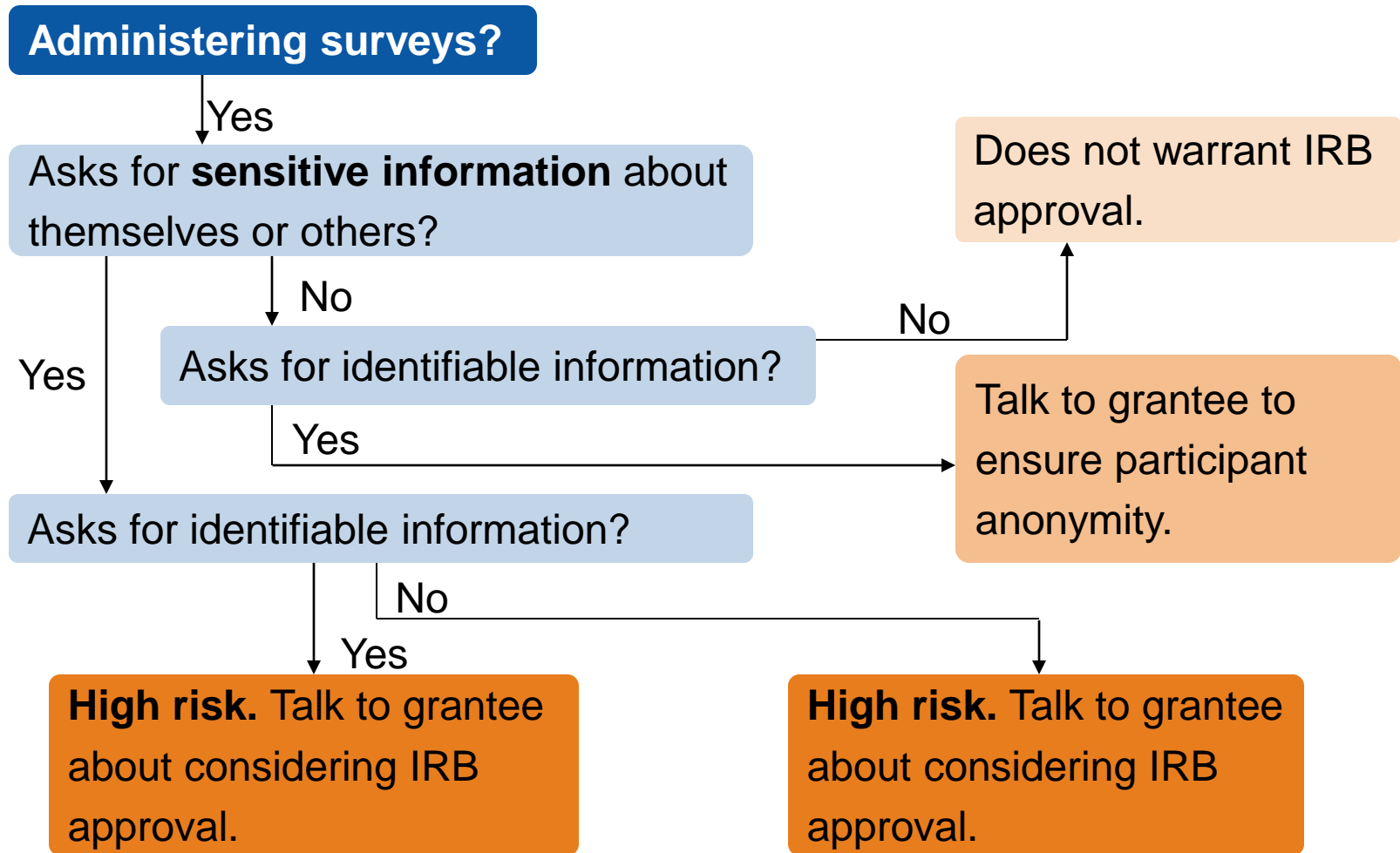


Potential Risks & Issues in a Survey

Discussion Questions:

- Are there any **potential risks** to a person filling out this survey?
- Do the answers to any of the questions include **identifiable information**?
- Are any of the questions **sensitive**?

Decision Tree – Survey



Survey Debrief

Is the provided information:

- Identifiable?
 - Clearly identifiable
 - Not identifiable
 - Identifiable depending on context
- Sensitive?
 - Clearly sensitive
 - Not sensitive
 - Sensitive depending on context
- Targeting a vulnerable population?

SURVEY

What is your name? _____

What is your street name? _____

Do you have access to clean water? Y / N _____

What is your favorite color? _____

How would you describe where you live? (Circle one)

House/Apartment	Institution	Shelter
Hotel	Street/Homeless	Other

Have you ever used any illegal substances? Y / N _____

What kind of diapers do you buy? _____

Do you have credit card debt? Y / N _____

Are you receiving public assistance? Y / N _____

Do you know anyone in your office who can do a headstand? Y / N If yes, who? _____

Do you know anyone who's cheated on their income tax? Y / N
↳ If yes, was it you? Y / N If no, what is their name? _____

When is your birthday? _____

Do you know someone who is currently in jail? Y / N
↳ If yes, what is your relationship with that person? _____

Summary of Resource Documents

Human Subjects Protection Overview

Tools & Guidelines

- Issues Spotting Guidelines
- Data Collection Decision Trees

Example Materials

Additional Resources

- Grant Scenario
 - IRB Approval Process
 - Information & Consent Form
 - Language for Interview Protocols
- Definition Guide
 - History of Human Subject Protection
 - Additional External Resources

Summary of Training Toolkit

- Activity Guide
- PowerPoint Presentation
- Mock Focus Group
- Sample Survey
- Scenarios and *What If?* Cards

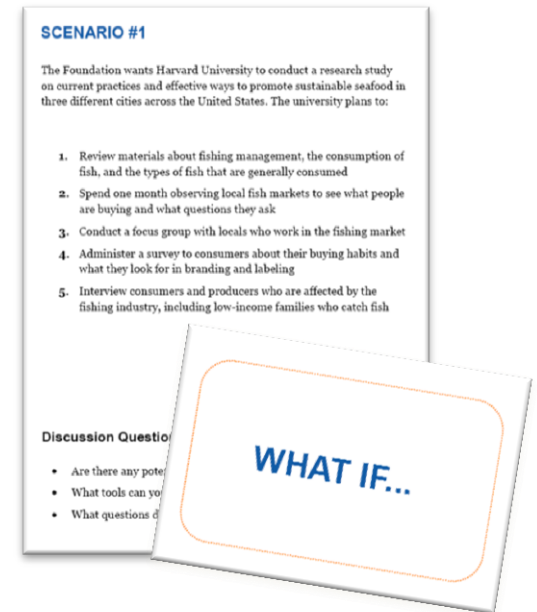
Scenarios

Read and discuss the scenario at your table.

1. Sustainable seafood
2. After-school programs
3. Family planning for teenagers

Discussion Questions:

- Are there any **potential issues** inherent in these plans?
- What **tools** can you use to figure out potential issues?
- What **questions** do you have for the grantee?



Questions



Permissions



Ensuring the Rights of Study Participants: Resources for Philanthropic Organizations by [BTW informing change](http://btw.informingchange.com) is licensed under a [Creative Commons Attribution-NonCommercial-NoDerivs 3.0 Unported License](https://creativecommons.org/licenses/by-nc-nd/3.0/). Permissions beyond the scope of this license may be available at <http://btw.informingchange.com/about/contact-us>.